

# ORQUESTA TIPICA FERNANDEZ FIERRO

## RIDER 2017

### Contacts

#### Sound Operator

**Demián Poti**

[demian\\_maula@hotmail.com](mailto:demian_maula@hotmail.com)

CEL. +54 9 11 6782 7682

#### Press

**Marta del Pino**

[marta@fernandezfierro.com](mailto:marta@fernandezfierro.com)

CEL. +54 9 11 4172 6703

#### Light Operator

**Walter Cócáro**

[tano@fernandezfierro.com](mailto:tano@fernandezfierro.com)

CEL. +54 9 11 5772 3082

### Technical Rider

#### Stage

- Minimum usable stage size: 8m x 5m, raised at least 70 cm.
- Outdoor venue: stage should be adequate for the venue size with roof and sheltered.

#### Soundcheck, lighting and scenery setup

Soundcheck and lighting setup can take up to three (3) hours. It is desirable to have that time. The sound system, lighting system and schedule for sound/lighting check should be approved by our technical staff via email at least 15 days before the show.

#### Personnel required

- One (1) sound assistant
- One (1) lighting assistant
- Assistants or technical staff in charge of equipments.

*(Sound and light operators provided by the artist)*

#### Backline

- One (1) grand-piano piano in excellent condition, tuned in 442 Hz (the tuning of the bandoneons cannot be adapted). The piano must be tuned the day of the performance. An adjustable piano bench should be provided. \*OTFF DOESN'T PLAY WITH ELECTRONIC PIANO.
- One (1) 3/4 concert double-bass in excellent condition. Configured for classical (bow) playing (NO jazz setup). NO plywood. Preferably: flat back, Flexocord cords (original) / Jargar, Dresden bridge.

- One (1) 4/4 cello in excellent condition. Configured for classical orchestra playing.
- **Bass amp:**
  - Ampeg or Gallien-Krueger Bass Head (200w or more).
  - 1 x15" box
  - 4 x10" box

### Scenery

- Placing of artist handmade flags (4m x 3m) behind the stage or a projector for OTFF's logo.
- Three (3) 2.40m x 1.20m x 0.40m platforms/risers for violins, viola and cello.
- Five (5) 50 cm high armless chairs for bandoneons and cello. Preferably black.
- Stage curtain will be used if applicable.

*(Please see attached Stage Plot)*

### Sound system

Minimum three-way stereo sound system is required. Distortion should not exceed 5% in all the frequency range.

*(Please see attached Stage Plot)*

### Acoustic system

Preferred: LINE ARRAY. Others: Meyer Sound - EAW -DAS - NEXO. The acceptance of other systems or labels will depend on the artist and operator criteria.

### Console

- 24 channel mixer
  - Analogic:* Midas, Yamaha (PM4000), Allen & Heath (ML 5000, ML4000, GL4000), Soundcraft.
  - Digital:* Digico, Yamaha (M7L, LS9), Allen & Heath ILive, Digidesign Venue.
- The console should be run from the house, not from a place on stage.

### FOH Rack

- Two (2) compressors (DBX 160 / 266 )
- One (1) multi effects unit (Yamaha SPX 900/990 - Lexicon PCM 70/80/90)
- One (1) delay (TC, Korg 2000 or similar)
- Five (5) 31-band graphic EQ stereo (Klark Technic, Ashley)

### Monitor

- Eight (8) separated mixes
- Enough power to deliver ~110 db without distortion.
- Nine (9) 12"+1" stage floor monitors (Meyer, DAS, NEXO, JBL, STS)

## Channels & Mics

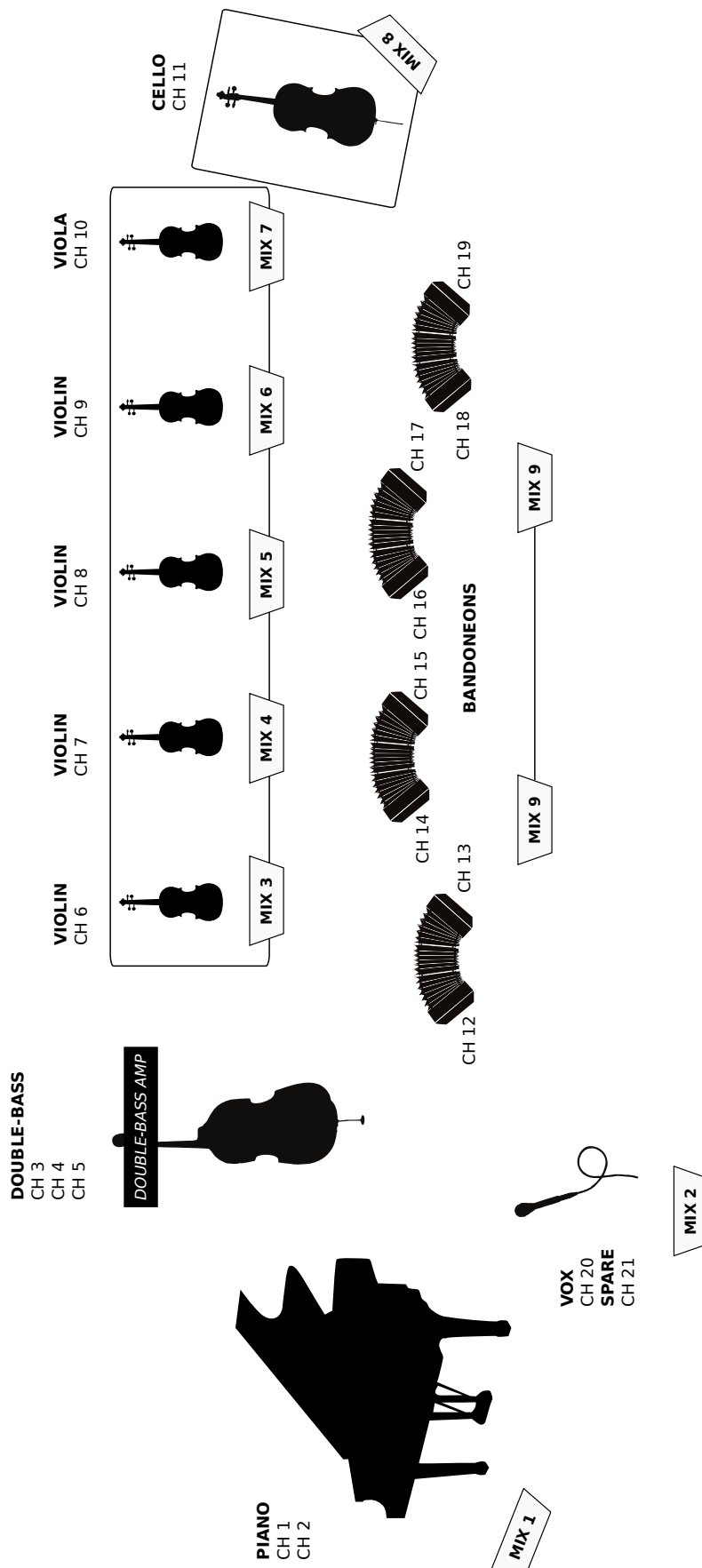
CH	Instrument	Mic	Stand	Insert
1	Piano Left	Shure SM58	Tall+ boom	
2	Piano Right	Shure SM81	Tall + boom	
3	Double bass Mic VOX	Shure SM58	Tall + boom	
4	Double bass	Shure SM57	Short + boom	Compressor
5	Double bass	Shure SM57	Short + boom	Compressor
6	Violin 1	Shure SM57	Tall + boom	
7	Violin 2	Shure SM57	Tall + boom	
8	Violin 3	Shure SM57	Tall + boom	
9	Violin 4	Shure SM57	Tall + boom	
10	Viola	Shure SM57	Tall + boom	
11	Cello	Shure SM57	Short + boom	
12	Bandoneon 1 R	XLR (ATM350 provided by the musicians)		
13	Bandoneon 1 L	XLR (ATM350 provided by the musicians)		
14	Bandoneon 2 R	XLR (ATM350 provided by the musicians)		
15	Bandoneon 2 L	XLR (ATM350 provided by the musicians)		
16	Bandoneon 3 R	XLR (ATM350 provided by the musicians)		
17	Bandoneon 3 L	XLR (ATM350 provided by the musicians)		
18	Bandoneon 4 R	XLR (ATM350 provided by the musicians)		
19	Bandoneon 4 L	XLR (ATM350 provided by the musicians)		
20	Vox Lead	Shure SM 58 Beta	Tall	Compressor
21	Vox Lead (SPARE)	Shure SM 58 Beta		

Note 1: violin and bandoneons ordered from left to right.

Note 2: please send an e-mail with sound/lighting counter-rider to our operator (with CC to Booking) at least 15 days before the show.

Note 3: Outdoor venue: mic wind protection required.

# ORQUESTA TÍPICA FERNÁNDEZ FIERRO



## Lighting

### Console

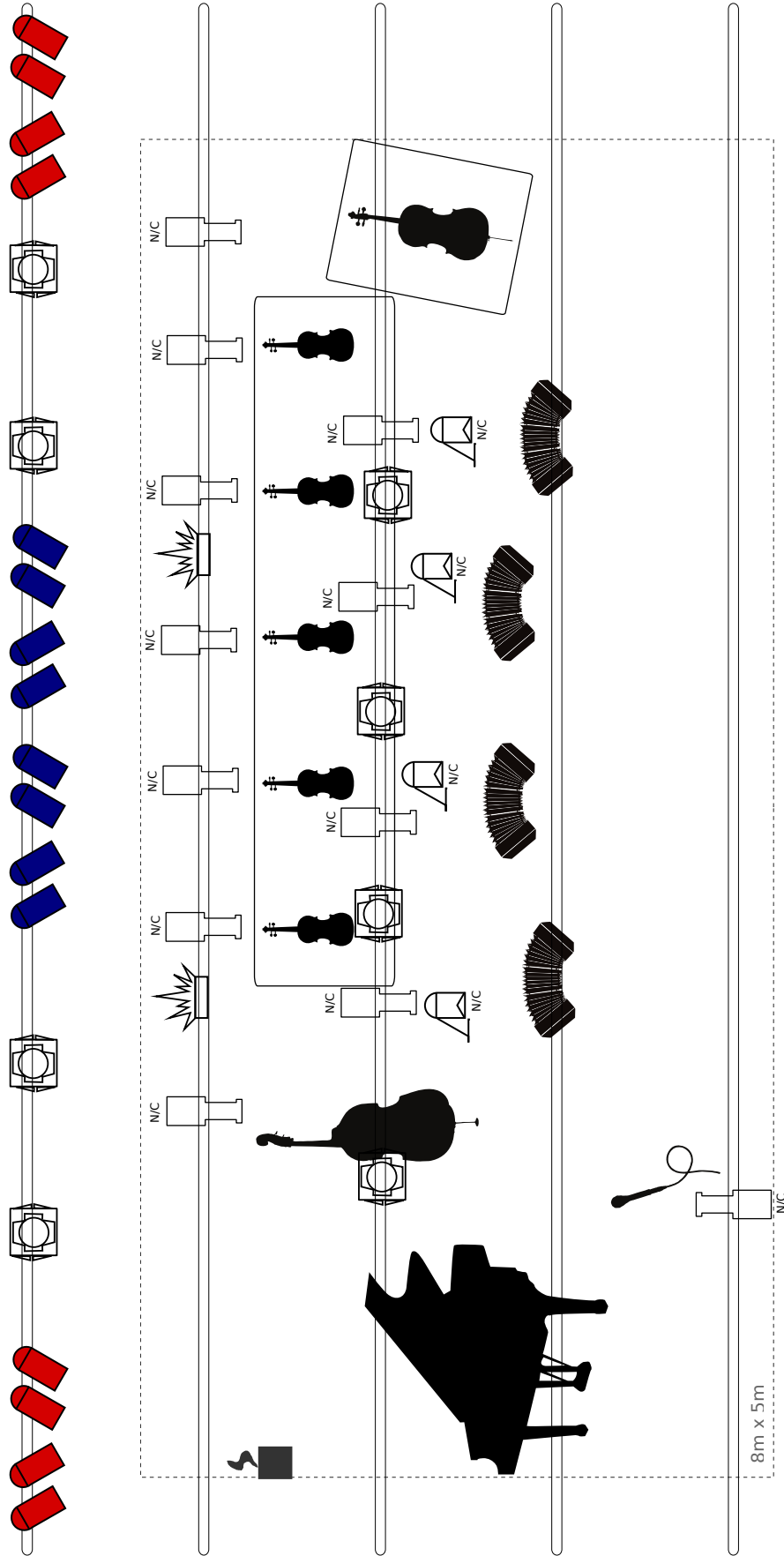
*Digital:* preferred AVOLITE PEARL.







*Analogic:* 24/48 channels. Console must be in front of stage with good visual.

Artifact	Qty.	
Ellipsoidal	13	N/C
PAR 64	8	L119
	8	L029
	4	N/C
Mobile	8	
Strobo	2	
Smoke machine	1	

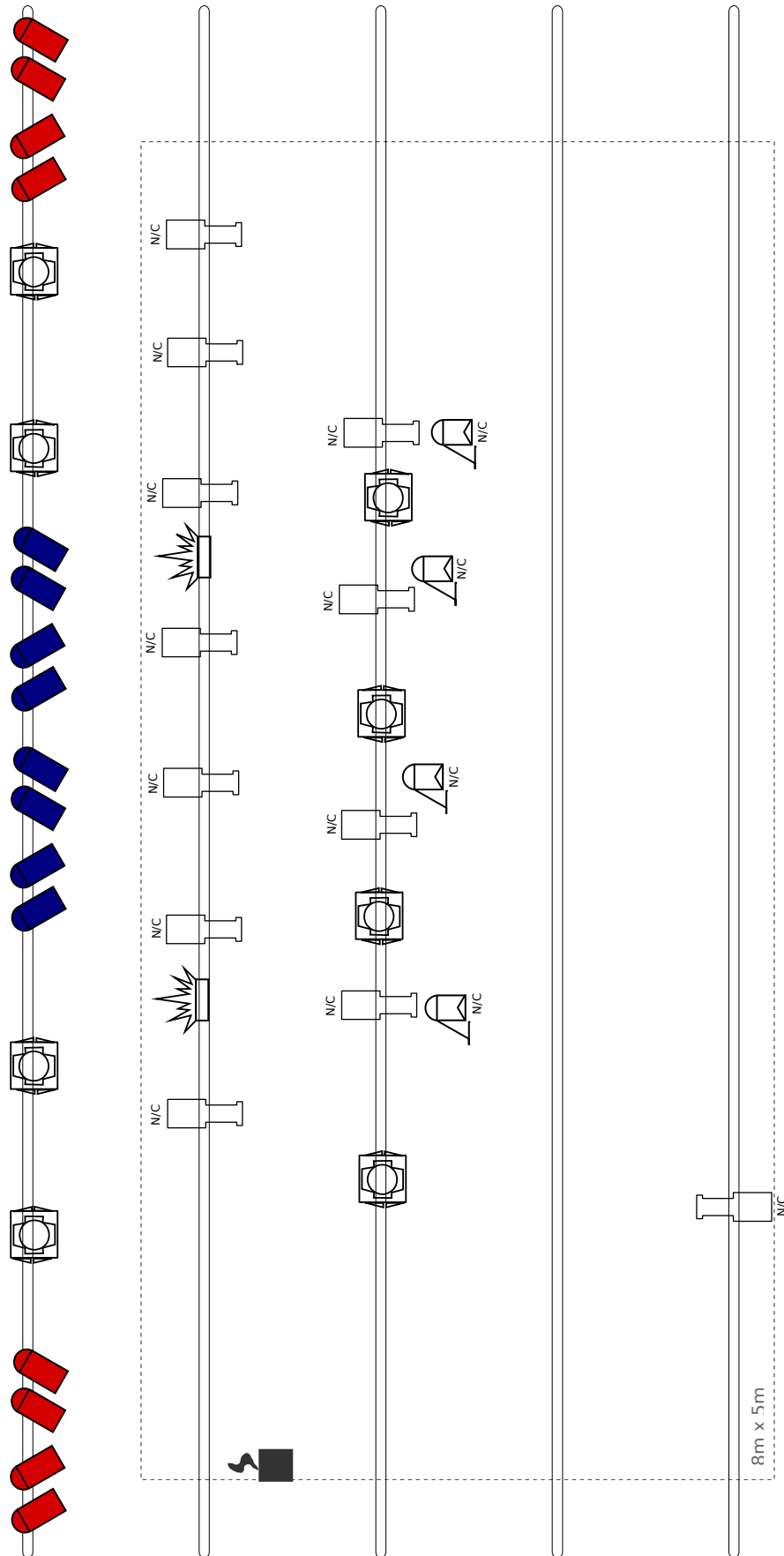
CH		Qty.	Artifact
1	Vox Lead	1	Ellipsoidal N/C
2	Piano and doublebass	2	Ellipsoidal N/C
3	Bandoneons	3	Ellipsoidal N/C
4	Violins, viola and cello	5	Ellipsoidal N/C
5	Floor	4	PAR 64 N/C
6	Strobo	2	
7	L119	8	PAR 64 L119
8	L029	8	PAR 64 L029
9	Mobile	4	
10	Mobile	4	

# ORQUESTA TÍPICA FERNÁNDEZ FIERRO



-  13 x ELLIPSOIDAL
-  4 x PAR 64
-  16 x PAR 64
-  8 x MOBILE
-  2 x STROBO
-  1 x SMOKE MACHINE
-  3 x PLATFORM  
2,4m x 1,2m x 0,4m

# ORQUESTA TÍPICA FERNÁNDEZ FIERRO



- 
13 x ELLIPSOIDAL
- 
4 x PAR 64
- 
16 x PAR 64
- 
8 x MOBILE
- 
2 x STROBO
- 
1 x SMOKE MACHINE

# General

## Dressing rooms

Dressing rooms for 15 people, clean, comfortable, well heated, ventilated and lit, exclusive and secure, with direct private access to the stage.

## Recording / Transmission of audio and/or video

Promoter should not make any audio or video recordings or broadcasts of the performance(s) nor will it knowingly allow the same, without the prior written consent of the artist.

## Merchandising sales

Please, supply a booth or table for the sale of artist's merchandise before and after the performance. The stand will be in charge of promoters staff unless its agreed otherwise.

## Promotional material

Please, request promotional material (photos, press releases, bios, music, videos, CD , DVD, etc) directly to us. The advertising and promotion of the concert should be approved and authorized by the artist before its publishing or broadcasting Any piece of advertising should be sent via email to Press and Manager contact.

## Staff

15 people: 13 musicians, sound op., lighting op..

## Rooming

Seven (7) double and one (1) single rooms. Hotel of good standing, breakfast and internet included, preferably near the venue.

## Per Diem

To be agreed.

## Transportation

*International:* air transport, 15 tickets from and to Buenos Aires. All taxes (including the airport taxes) paid by the promoter.

*Local:* accommodation for 15 people + luggage + instruments. According to the necessity plan, bus or ship can be acceptable. In the case of land transportation, the accommodations should be enough for 15 people and the transportation vehicle should be of exclusive use of the artist.

*Internal transportation:* van for 15 people (artists, luggage and instruments) airport-hotel and all the trips necessary for the venue and media events.

## Visas

The local promoter will be in charge of obtaining and paying all the related expenses of any kind of visa or similar without exceptions.

Accepted by .....

DATE.....

BUENOS AIRES, ARGENTINA. Thanks.